

ГАЗОАНАЛИЗАТОРЫ GT1-CO, GT10-CO2

ТЕХНИЧЕСКИЕ ХАРАКТЕРИСТИКИ

По вопросам продаж и поддержки обращайтесь:

Архангельск (8182)63-90-72	Калининград (4012)72-03-81	Нижний Новгород (831)429-08-12	Смоленск (4812)29-41-54
Астана +7(7172)727-132	Калуга (4842)92-23-67	Новокузнецк (3843)20-46-81	Сочи (862)225-72-31
Белгород (4722)40-23-64	Кемерово (3842)65-04-62	Новосибирск (383)227-86-73	Ставрополь (8652)20-65-13
Брянск (4832)59-03-52	Киров (8332)68-02-04	Орел (4862)44-53-42	Тверь (4822)63-31-35
Владивосток (423)249-28-31	Краснодар (861)203-40-90	Оренбург (3532)37-68-04	Томск (3822)98-41-53
Волгоград (844)278-03-48	Красноярск (391)204-63-61	Пенза (8412)22-31-16	Тула (4872)74-02-29
Вологда (8172)26-41-59	Курск (4712)77-13-04	Пермь (342)205-81-47	Тюмень (3452)66-21-18
Воронеж (473)204-51-73	Липецк (4742)52-20-81	Ростов-на-Дону (863)308-18-15	Ульяновск (8422)24-23-59
Екатеринбург (343)384-55-89	Магнитогорск (3519)55-03-13	Рязань (4912)46-61-64	Уфа (347)229-48-12
Иваново (4932)77-34-06	Москва (495)268-04-70	Самара (846)206-03-16	Челябинск (351)202-03-61
Ижевск (3412)26-03-58	Мурманск (8152)59-64-93	Санкт-Петербург (812)309-46-40	Череповец (8202)49-02-64
Казань (843)206-01-48	Набережные Челны (8552)20-53-41	Саратов (845)249-38-78	Ярославль (4852)69-52-93

сайт: greisinger.nt-rt.ru || эл. почта: gre@nt-rt.ru

CO Transmitter GT1-CO



- TÜV certification according to VDI 2053
- Long-lasting electrochemical measuring cell
- Automatic zero calibration

Characteristics

The GT1-CO is a high-quality and TÜV certified CO transmitter (incl. measuring cell) for detection of carbon monoxide in underground and parking garages, boiler plants, heating systems, garages as well as in ambient air.

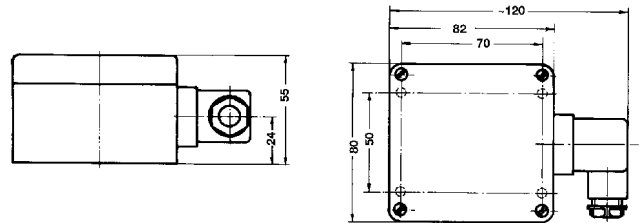
The GT1-CO has a very long-lasting electrochemical measuring cell. It can be easily integrated in existing CO surveillance systems (without loss of validity of existing TÜV certificates).

Displays, controller and alarm devices can be connected via 2-wire system without difficulty.

Technical data

Measuring range	: 0..300 ppm CO (carbon monoxide)
Measuring principle	: electrochemical, permanent measuring
Reproducibility	: < 3 ppm according to VDI 2053
Response time T ₉₀	: < 60 s
Cross sensitivity	: ≤ 2 % of 300 ppm CO
Linearity error	: ≤ 2 % of 300 ppm CO
Offset adjustment	: automatic
Output signal	: 4..20 mA, 2-wire
Working temperature	: -10..+40 °C
Power supply	: 12..28 V DC (at option VO: 16..26 V DC)
Permissible burden	: R _A [Ω]=(U _V [V] - 12 V or 16 V) / 0.02 A
Electric connection	: elbow-type plug (EN 175301-803/A), max. wire cross section: 1.5 mm ² , wire diameter from 4.5..7.0 mm
Housing	: ABS

Dimensions



Ordering code

GT1-CO - 1.

1. Option	
00	without option
VO	on-site display

Ordering example:
GT1-CO-00

Accessories

GZ-01

Test gas cap GT (for controlled flow with test gas)

GZ-02

Gas bottle with 12l test gas: 30 ppm CO

GZ-03

Gas bottle with 12l test gas: 300 ppm CO

GZ-04

Gas valve unit MiniFlo for 12l gas bottles

CO₂ Transmitter GT10-CO2-1R



- Excellent long term stability
- Auto-calibration procedure
- Output signal freely scalable

Characteristics

The high-quality and precise CO₂ transmitter works according to the infrared principle (NDIR). An auto-calibration procedure compensates aging effects. This ensures the excellent long-term stability of this transmitter.

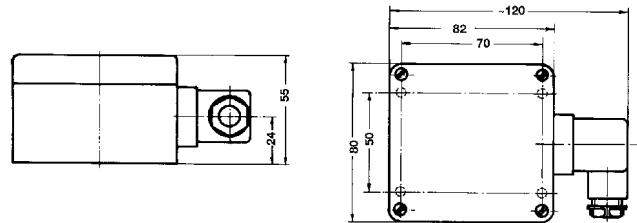
Due to the fact that CO₂ is an important indicator for air quality in rooms, it is very important for modern climate control to measure the CO₂ content.

Due to the freely adjustable output signal the transmitter can be used for nearly each existing controller input. Additionally, there is an on-site display which shows beside the current CO₂ concentration the minimum and maximum values as well as an optical alarm.

Technical data

Measuring range	
MB1	: 0..2000 ppm CO ₂
MB2	: 0..5000 ppm CO ₂
Measuring principle : infrared principle (NDIR)	
Accuracy	
MB1	: ±50 ppm ± 2 % of meas. value
MB2	: ±50 ppm ± 3 % of meas. value
Output signal (only O ₂) : 4..20 mA, 0..1 V, 0..10 V (3-wire)	
Working temperature : -10..+50°C	
Power supply : 12..30 V DC at 4..20 mA and 0..1 V 18..30 V DC at 0..10 V max. 600 mA	
Permissible burden : R _A < 200 Ω	
Permissible load : R _L > 3000 Ω	
Display : 10 mm high, 4-digit LCD-display	
Electric connection : elbow-type plug (EN 175301-803/A), max. wire cross section: 1.5 mm ² , wire diameter from 4.5..7.0 mm	
Housing : ABS	

Dimensions



Ordering code

GT10-CO2-1R - 1. - 2.

1. Measuring range	
MB1	MB1: 0..2000 ppm CO ₂
MB2	MB2: 0..5000 ppm CO ₂
2. Output signal	
A1	4..20 mA (3-wire)
V1	0..1 V (3-wire)
V2	0..10 V (3-wire)

Ordering example:
GT10-CO2-1R-MB1-A1

По вопросам продаж и поддержки обращайтесь:

Архангельск (8182)63-90-72	Калининград (4012)72-03-81	Нижегород (831)429-08-12	Смоленск (4812)29-41-54
Астана +7(7172)727-132	Калуга (4842)92-23-67	Новокузнецк (3843)20-46-81	Сочи (862)225-72-31
Белгород (4722)40-23-64	Кемерово (3842)65-04-62	Новосибирск (383)227-86-73	Ставрополь (8652)20-65-13
Брянск (4832)59-03-52	Киров (8332)68-02-04	Орел (4862)44-53-42	Тверь (4822)63-31-35
Владивосток (423)249-28-31	Краснодар (861)203-40-90	Оренбург (3532)37-68-04	Томск (3822)98-41-53
Волгоград (844)278-03-48	Красноярск (391)204-63-61	Пенза (8412)22-31-16	Тула (4872)74-02-29
Вологда (8172)26-41-59	Курск (4712)77-13-04	Пермь (342)205-81-47	Тюмень (3452)66-21-18
Воронеж (473)204-51-73	Липецк (4742)52-20-81	Ростов-на-Дону (863)308-18-15	Ульяновск (8422)24-23-59
Екатеринбург (343)384-55-89	Магнитогорск (3519)55-03-13	Рязань (4912)46-61-64	Уфа (347)229-48-12
Иваново (4932)77-34-06	Москва (495)268-04-70	Самара (846)206-03-16	Челябинск (351)202-03-61
Ижевск (3412)26-03-58	Мурманск (8152)59-64-93	Санкт-Петербург (812)309-46-40	Череповец (8202)49-02-64
Казань (843)206-01-48	Набережные Челны (8552)20-53-41	Саратов (845)249-38-78	Ярославль (4852)69-52-93

сайт: greisinger.nt-rt.ru || эл. почта: gre@nt-rt.ru